

Khomenko Larisa, Liutikov Oleksandr, Vishnevskiy Oleksii. Hybrid layer morphology on sound and caries-affected primary dentin. *Journal of Education, Health and Sport*. 2017;7(9):492-500. eISSN 2391-8306. DOI <http://dx.doi.org/10.5281/zenodo.1003062>

<http://ojs.ukw.edu.pl/index.php/johs/article/view/4941>

<https://pbn.nauka.gov.pl/sedno-webapp/works/833263>

The journal has had 7 points in Ministry of Science and Higher Education parametric evaluation. Part B item 1223 (26.01.2017).

1223 Journal of Education, Health and Sport eISSN 2391-8306 7

© The Author (s) 2017;

This article is published with open access at Licensee Open Journal Systems of Kazimierz Wielki University in Bydgoszcz, Poland

Open Access. This article is distributed under the terms of the Creative Commons Attribution Noncommercial License which permits any noncommercial use, distribution, and reproduction in any medium, provided the original author(s) and source are credited. This is an open access article licensed under the terms of the Creative Commons Attribution Non Commercial License (<http://creativecommons.org/licenses/by-nc/4.0/>) which permits unrestricted, non commercial use, distribution and reproduction in any medium, provided the work is properly cited.

This is an open access article licensed under the terms of the Creative Commons Attribution Non Commercial License (<http://creativecommons.org/licenses/by-nc/4.0/>) which permits unrestricted, non commercial use, distribution and reproduction in any medium, provided the work is properly cited.

The authors declare that there is no conflict of interests regarding the publication of this paper.

Received: 05.09.2017. Revised 10.09.2017. Accepted: 25.09.2017.

Hybrid layer morphology on sound and caries-affected primary dentin

Larisa Khomenko, Oleksandr Liutikov, Oleksii Vishnevskiy

¹ Department of pediatric and preventive dentistry, National Bogomolets Medical University, (Ukraine, Kyiv)

² M.P. Semenenko Institute of geochemistry, mineralogy and ore formation of the National Academy of sciences of Ukraine (Ukraine, Kyiv)

Key words: primary teeth, adhesive systems, hybrid layer, caries-affected dentin, sound dentin

Abstracts:

Introduction: Resin composite is the most suitable esthetic alternative option for primary teeth restoration. Dentists encounter with caries-affected dentin (CAD) nor sound (SD), in every day practice. Caries-affected dentin is uninfected, only partially demineralized and remineralizable under physiological conditions. Morphological features of CAD can affect hybrid layer formation.

The aim of this in vitro study was to evaluate morphology of hybrid layer produced by different adhesive systems on sound and caries-affected primary dentine.

Materials and methods: Forty sound and caries-affected extracted primary molars were used in this study. Teeth from each substrate (SD and CAD) were randomly allocated to 4 groups, according to adhesive systems (Optibond FL (Kerr), Optibond SoloPlus (Kerr), Single Bond Universal in etch&rinse and self-etch mode (3M)). Hybrid layer morphology and homogeneity, presents of resin tags and gaps were analyzed in each specimen by FE-SEM (JSM-6700F JEOL, Japan). Statistical analysis was conducted with Kruskal-Wallis test ($p < 0,05$).

Results: All adhesives formed clearly visible hybrid layer with numerous resin tags on CAD of primary teeth, even self-etch mode. The resin tags were shorter irregular hybrid layer was porous. The porous zones were visualized beneath the hybrid layer in CAD and etch&rinse adhesive systems. Dentin tubules were often obliterated with rhomboid crystals which wasn't removed by acid. Some specimens of caries-affected dentin had microcavities, cracks and porosity under hybrid layer. There were no significant differences in hybrid layer thickness between SD and CAD for each adhesive system.

Conclusions: Etch&rinse adhesive systems produce pronounced hybridize complex on sound and caries-affected primary dentin. Dentin substrate and adhesive system type affects hybrid layer formation.

Introduction.

Resin composite is the most suitable esthetic alternative option for primary teeth restoration [1]. Self-etch or etch&rinse adhesive approach can be used in this case [2]. Nowadays, universal adhesive systems became more popular due to technical friendly [3]. Also, lots of investigations are focused on sound primary or permanent dentin. Despite this, dentists encounter with caries-affected dentin (CAD) nor sound (SD), in every day practice. Caries-affected dentin is uninfected, only partially demineralized and remineralizable under physiological conditions. It should be preserved during minimal-invasive caries tissues removing [4]. Caries-affected dentine characterized by less mineral content, reversibly decreasing of collagen cross-links, minerals depositions in dentin tubules, high water content. Also, CAD is softer than SD [5,6,7,8,9]. These features are important for long-term durable bonding.

The previous studies demonstrate that adhesive systems produce thicker hybrid layer not only on primary dentin compare to permanent, but on CAD too [10, 11]. Bond strength is lower to CAD, with cohesive failure type predominantly [12]. Additionally, more researches were conducted on artificially-induced caries-affected dentin model nor natural CAD of primary

teeth. It is very important to evaluate adhesive systems behavior on natural caries-affected primary dentin [3, 13].

The aim of this in vitro study was to evaluate morphology of hybrid layer produced by different adhesive systems on sound and caries-affected primary dentine. The null hypothesis was “there are no significant differences in the hybrid layer morphology on sound and caries-affected dentin”.

Materials and methods:

Forty sound (SD) and caries-affected (CAD) extracted for orthodontic reasons primary molars were used in this study. The teeth were stored in 0,5% chloramine solution at 4⁰C no more than one month. Occlusal third was removed with slow-speed water-cooled diamond saw. In CAD substrate the caries tissue was removed with round carbide bur in low-speed handpiece. In SD substrate the standard smear layer was created by wet sanding with 600-grit SiC paper. Teeth from each substrate (SD and CAD) were randomly allocated to 4 groups, according to adhesives (Optibond FL (Kerr), Optibond SoloPlus (Kerr), Single Bond Universal in etch&rins and self-etch mode (3M)) (Table 1). For etch&rins adhesives dentin was etched with 37% phosphoric acid per 15 s (according to manufacturer’s recommendations), rinsed with water for 30 s and wet-dried with air. The tested adhesives were applied according to manufacturer’s recommendations and light-cured for 20 s. Bonded dentin surfaces were built-up with 2 mm of resin composite Filtek Universal (3M) and cured for 20 s. Then, they were stored in distilled water for 24 h at 37⁰C. Next, restored teeth were cross-sectioned perpendicularly to resin-dentine interface with slow-speed water-cooled diamond saw. Prepared specimens were wet-polished with decreasing abrasiveness SiC paper (600, 1000, 1200, 1500, 2000 and 2500-grit) and ultrasonically cleaned for 10 min. Polished surfaces were etched with 37% phosphoric acid for 15 s, rinsed with distilled water and deproteinized with 2,5% sodium hypochlorite per 15 min followed by rinsing in distilled water. Then, the specimens were air-dried and dehydrated in ascending ethanol concentrations (50%, 75%, 95% and 100%) for 20 min in each solution. Mounted specimens were platinum-sputtered under high vacuum (JFC-1600 JEOL, Japan) and evaluated by FE-SEM (JSM-6700F JEOL, Japan) in second electron mode, at 10 kV accelerating voltage, under 500-40000x magnifications. Hybrid layer morphology and homogeneity, presents of resin tags and gaps were analyzed in each specimen. Statistical analysis was conducted with Kruskal-Wallis test and Mann-Whitney U test post hoc (p<0,05).

Table 1. Materials, composition and application mode

Adhesive system (manufacturer)	Main components	pH	Application mode
Optibond FL (Kerr) (OBFL)	Primer: HEMA, GPDM, PAMM, ethanol, water, CQ Adhesive: Bis-GMA, HEMA, GPDM, CQ, glycerol,	1,9 6,9	Dentin etch for 15 s, rinse and wet-dry, apply Primer for 15 s, air dry 10 s, apply

	dimethacrylate resins, barium aluminoborosilicate glass, solicon dioxide, sodium hexafluorsilicate (filled 48% wt)		Adhesive for 15 s, air dry for 5 s and light-cure for 20 s
Optibond Solo Plus (Kerr) (OBSP)	Bis-GMA, HEMA, GDP, GPDM, CQ, water, barium aluminoborosilicate glass, solicon dioxide, sodium hexafluorsilicate (filled 15% wt)	2,2	Dentin etch for 15 s, rinse and wet-dry, apply adhesive for 15 s, air dry for 5 s and light-cure for 20 s
Single Bond Universal (3M) (SBU)	MDP phosphate monomer, dimethacrylate resins, HEMA, Vitrebond copolymer, filler, ethanol, initiators and silane	2.7	Etch&rinse mode: Dentin etch for 15 s, rinse and wet-dry, apply adhesive for 15 s, air dry for 5 s and light-cure for 20 s Self-etch mode: apply adhesive for 15 s, air dry for 5 s and light-cure for 20 s

Results:

SEM morphology of hybrid layer in dentin varied according to evaluated adhesives systems and dentin substrate (SD or CAD). Hybrid layer and resin tags were observed in each case (Fig 1.). All etch & rinse adhesives produced uniform hybrid layer with numerous resin tags on sound dentine. When dentin was etched with phosphoric acid for 15 s the smear layer and plugs were completely removed and dentin tubules orifices were opened and enlarged. OBFL formed significantly thick hybrid layer (4,15 μm) ($p < 0,05$) which was closely adapted to dentin surface. Numerous cone-shape resin tags with lateral branches were observed in dentin tubules. In case of OBSP submicron hybrid layer was defined (1,04 μm) and was visible only under high magnification (Table 2). All dentin tubules were completely sealed with cone-shape resin tags with numerous lateral branches. For OBFL and OBSP internal triangular hybridization of dentin tubules walls were typical. SBU produced substantial and continuous hybrid layer (3,68 μm) in etch&rinse mode. Resin tags were dense and numerous with unit lateral branches. SBU formed unclearly visible hybrid layer (2,85 μm) in self-etch mode. Hybridized area was wide deboned along dentin or composite interface. Unit short tape cylindrical resin tags were revealed. Majority of dentin tubules orifices were blocked by resin impregnated smear plugs. There was no significant difference in etch&rinse and self-etch mode of hybrid layer thickness for SBU.

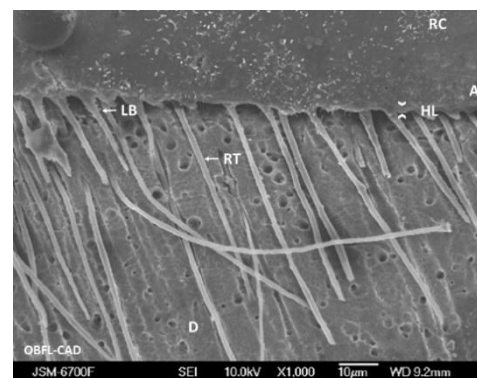
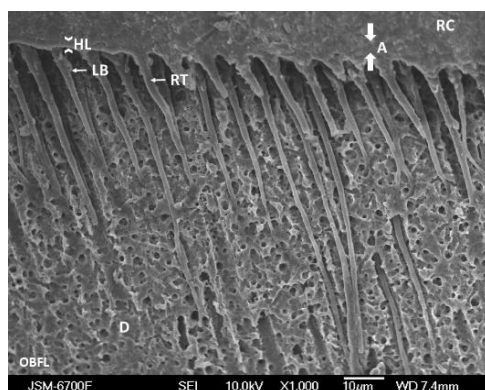
Table 2. Hybrid layer thickness (μm) means and standard deviations on sound and caries-affected primary dentin

Adhesive system	Sound dentin ^b	Caries-affected dentin ^b
Optibond Fl (Kerr)	4,15±0,64	3,31±0,23
Optibond Solo Plus (Kerr)	1,04±0,21	1,44±0,31
Single Bond Universal (3M) etch&rinse mode	3,68±0,63	3,52±0,42
Single Bond Universal (3M) self-etch mode	2,85±0,81	1,87±0,42

^a significant different between substrate

^b significant different between adhesive system

Resin-dentin interface morphology for caries-affected primary dentin had some differences for evaluated adhesive systems. All adhesives formed clearly visible hybrid layer with numerous resin tags, even self-etch mode of SBU. But, the resin tags were shorter irregular and easily broken during specimen preparation, hybrid layer was porous. Also, the porous zones were visualized beneath the hybrid layer in caries-affected dentin and etch&rinse adhesive systems. Dentin tubules were often obliterated with rhomboid crystals which wasn't removed by acid. Some specimens of caries-affected dentin had microcavities, cracks and porosity under hybrid layer. Cohesive type of debonding was the most typical. There were no significant differences in hybrid layer thickness between SD and CAD for each adhesive system.



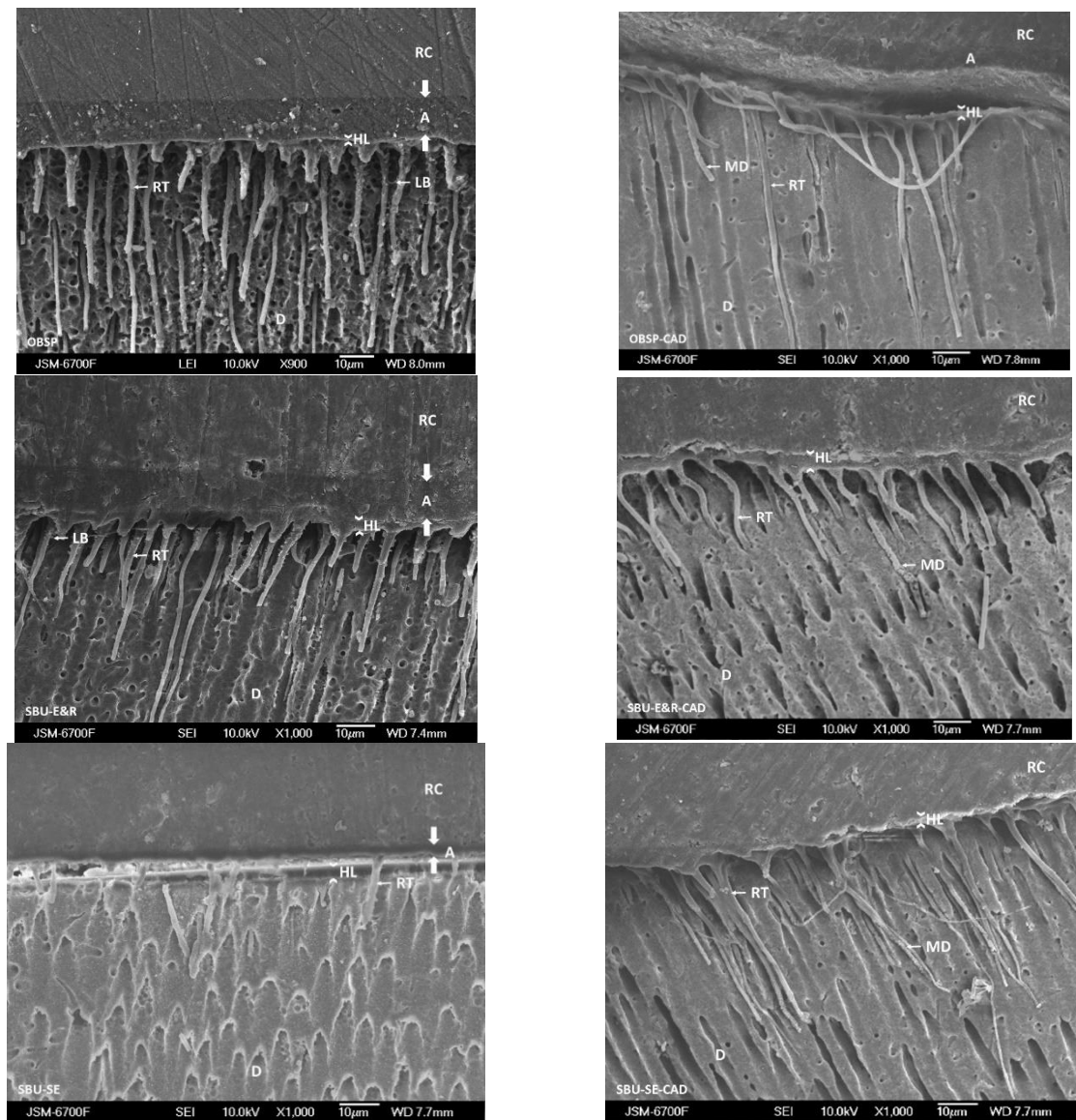


Fig 1. SEM microphotographs of resin-dentin interface of sound (left column) and caries-affected dentin (right column) (RC –resin composite, A – adhesive, HL – hybrid layer, RT – resin tag, LB – lateral branches, D – dentin, MD-mineral depositions).

Discussion:

Hybrid layer degradation due hydrolytic and enzymatic action with endogenous matrix metalloproteinase (MMP) is the main problem of resin-dentin interface [14].

Caries-affected dentin artificially-induced by pH-cycling model was used in previous studies [3,13]. The limitations of this model are that only superficial demineralization occur without alteration of collagen fibrils structure and mineral depositions in dentin tubules [15,16]. In the present study, natural caries-affected dentin of primary molars was used. It was obtained by complete caries excavating to firm dentin with caries marker control.

Since caries-affected dentin is less mineralized and more porous, acid etching produced deeper demineralization. This trends to formation of a substantial zone of unprotected

collagen fibrils within the hybrid layer [17]. Additionally, a higher water content in deeper demineralized dentin would block penetration of resin monomers which is one of the mechanisms of degradation process [18]. Presence of mineral deposits in CAD dentin tubules hinders complete resin penetration in dentin tubules [19]. These minerals cannot be dissolved by phosphoric acid, even in case of etching for 15 s. On the other hand, these deposits reduce dentin permeability and prevent hybrid layer degradation.

According to previous studies, hybrid layer thickness on CAD is higher compared to SD. We don't have significant differences in hybrid layer thickness between CAD and SD in our study. N. Gateva et al. (2012) reports that hybrid layer thickness for Optibond FL on sound primary and permanent dentin was 5,66 μm and 4,46 μm respectively [11]. This is comparable with our results.

Single Bond Universal is the universal adhesive system with middle acidity (pH 2,7) which contains 10-MDP and Vitrebond Comolymer. Self-etching mode leads to on-time demineralization and infiltration of dentin and excludes formation of uninfilted collagen fibrils layer [20]. Despite this, mild acidity of self-etch systems is not sufficiently effective in dissolution of smear layer and sound dentin with less hybrid layer and resin tags formation. In case of CAD, self-etch mode produces deeper demineralization with cylindrical resin tag formation.

Also, bond strength is lower to caries-affected dentin than to sound [20]. However, intrinsic weakness of caries-affected dentin may not be a clinical problem, if there is surrounding sound dentin and enamel that can provide high bond strength [5,10].

According to the results of our in vitro study, the null hypothesis was partially rejected. The study showed morphological differences in hybrid layer and resin tag formation on caries-affected dentin compared to sound dentin of primary teeth. But there were no significant differences in hybrid layer thickness.

Conclusions:

Etch&rinse adhesive systems produce pronounced hybridized complex on sound and caries-affected primary dentin. Dentin substrate and adhesive system type affects hybrid layer formation. Despite the result of this in vitro study, further evaluating of optimal etching time and long-term bonding stability needed for definitive recommendations.

References:

1. American Academy of Pediatric Dentistry. Guideline on Restorative Dentistry. *Pediatr Dent.* – 2016. 36(special issue): 250-262.
2. Lenzi TL., Gimenez T., Tedesco TK., Mendes FM., Rocha Rde O., Raggio DP. Adhesive systems for restoring primary teeth: a systematic review and meta-analysis of in vitro studies. *Int J Paediatr Dent.* 2016 Sep;26(5):364-75.
3. Lenzi TL., Raggio DP., Soares FZ., Rocha Rde O. Bonding Performance of a Multimode Adhesive to Artificially-induced Caries-affected Primary Dentin. *J Adhes Dent.* 2015 Apr;17(2):125-31.

4. Schwendicke F., Frencken JE., Bjørndal L., Maltz M., Manton DJ., Ricketts D., et al. Managing Carious Lesions: Consensus Recommendations on Carious Tissue Removal. *Adv Dent Res*. 2016 May;28(2):58-67.
5. Nakajima M., Kunawarote S., Prasansuttiporn T., Tagami J., Bonding to caries-affected dentin. *Japanese Dental Science Review*. 2011; 47(2):102-114.
6. Kuboki Y., Ohgushi K., Fusayama T. Collagen biochemistry of the two layers of carious dentin. 1977 Oct;56(10):1233-7.
7. Ogawa K., Yamashita Y., Ichijo T., Fusayama T. The ultrastructure and hardness of the transparent layer of human carious dentin. *J Dent Res* 1983;62:7—10.
8. Ito S., Saito T., Tay FR., Carvalho RM., Yoshiyama M., Pashley DH. Water content and apparent stiffness of non-caries versus caries-affected human dentin. *J Biomed Mater Res Part B Appl Biomater* 2005;72B:109—16.
9. Hosoya Y., Tay FR., Miyazaki M., Inoue T. Hardness and elasticity of sound and caries-affected primary dentin bonded with one-step self-etch adhesive. *Dent Mater J*. 2007 Jul;26(4):493-500.
10. Yoshiyama M., Tay FR., Doi J., Nishitani Y., Yamada T., Ito K., Carvalho RM., Nakajima M., Pashley DH. Bonding of self-etch and total-etch adhesives to carious dentin. *J Dent Res*. 2002 Aug;81(8):556-60.
11. Gateva N., Kabaktchieva R. Hybrid layer thickness in primary and permanent teeth—a comparison between total-etch adhesives. *Journal of IMAB*. 2012; 18(2):191–199.
12. Wei S, Sadr A, Shimada Y, Tagami J. Effect of caries-affected dentin hardness on the shear bond strength of current adhesives. *J Adhes Dent* 2008;10:431—40
13. Lenzi TL., Braga MM., Raggio DP. Shortening the etching time for etch-and-rinse adhesives increases the bond stability to simulated caries-affected primary dentin. *J Adhes Dent*. 2014 Jun;16(3):235-41.
14. Pashley DH., Tay FR., Yiu C., Hashimoto M., Breschi L., Carvalho RM., Ito S. Collagen degradation by host-derived enzymes during aging. *J Dent Res*. 2004;83:216-221.
15. Marquezan M., Corrêa FN., Sanabe ME., Rodrigues Filho LE., Hebling J., Guedes-Pinto AC., Mendes FM. Artificial methods of dentine caries induction: A hardness and morphological comparative study. *Arch Oral Biol*. 2009 Dec;54(12):1111-7.
16. Schwendicke F., Eggers K., Meyer-Lueckel H., Dörfer C., Kovalev A., Gorb S., Paris S. In vitro Induction of residual caries lesions in dentin: comparative mineral loss and nano-hardness analysis. *Caries Res*. 2015;49(3):259-65.
17. Wang Y, Spencer P, Walker MP. Chemical profile of adhesive/caries-affected dentin interfaces using Raman microspectroscopy. *J Biomed Mater Res A* 2007;81(2):279—86

18. Breschi L., Mazzoni A., Ruggeri A., Cadenaro M., Di Lenarda R., De Stefano Dorigo E. Dental adhesion review: aging and stability of the bonded interface. *Dent Mater.* 2008 Jan;24(1):90-101.
19. Nakajima M., Sano H., Burrow MF., Tagami J., Yoshiyama M., Ebisu S., et al. Tensile bond strength and SEM evaluation of caries-affected dentin using dentin adhesives. *J Dent Res* 1995;74:1679—88.
20. Van Meerbeek B., Yoshihara K., Yoshida Y, Mine A, De Munck J., Van Landuyt KL. State of the art of self-etch adhesives. *Dent Mater.* 2011 Jan;27(1):17-28.