

Conservation Assessment of Endemic Plants from Chitral Region, Pakistan

Ayesha Noor¹, Rizwana Khanum^{2,*}, Aijaz Ahmed³

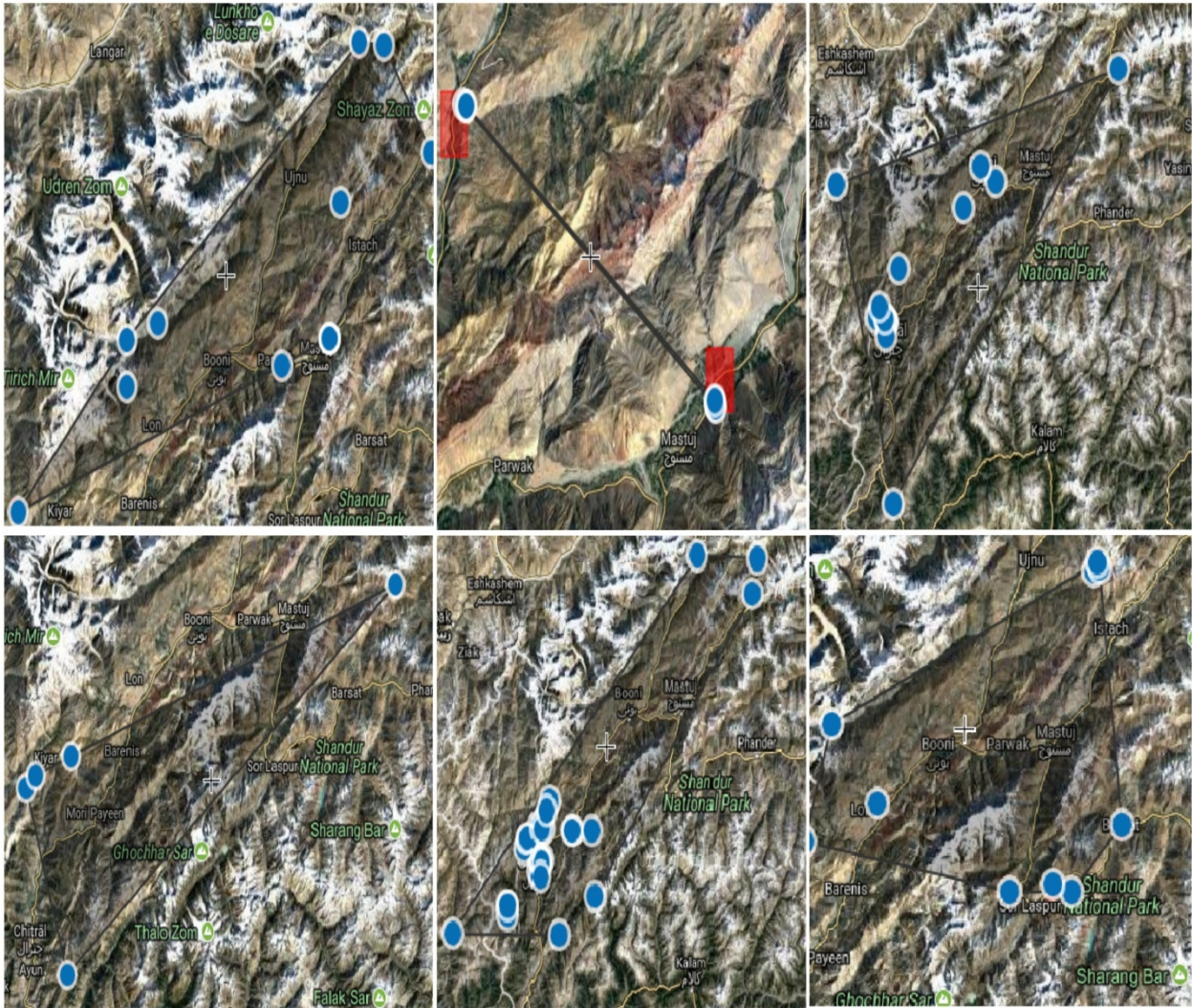
¹Department of Botany, University of Punjab, sub campus F.G College, Sadler Rawalpindi, Pakistan

²Curator, Pakistan Museum of Natural History, Islamabad, Pakistan, Post code 44000

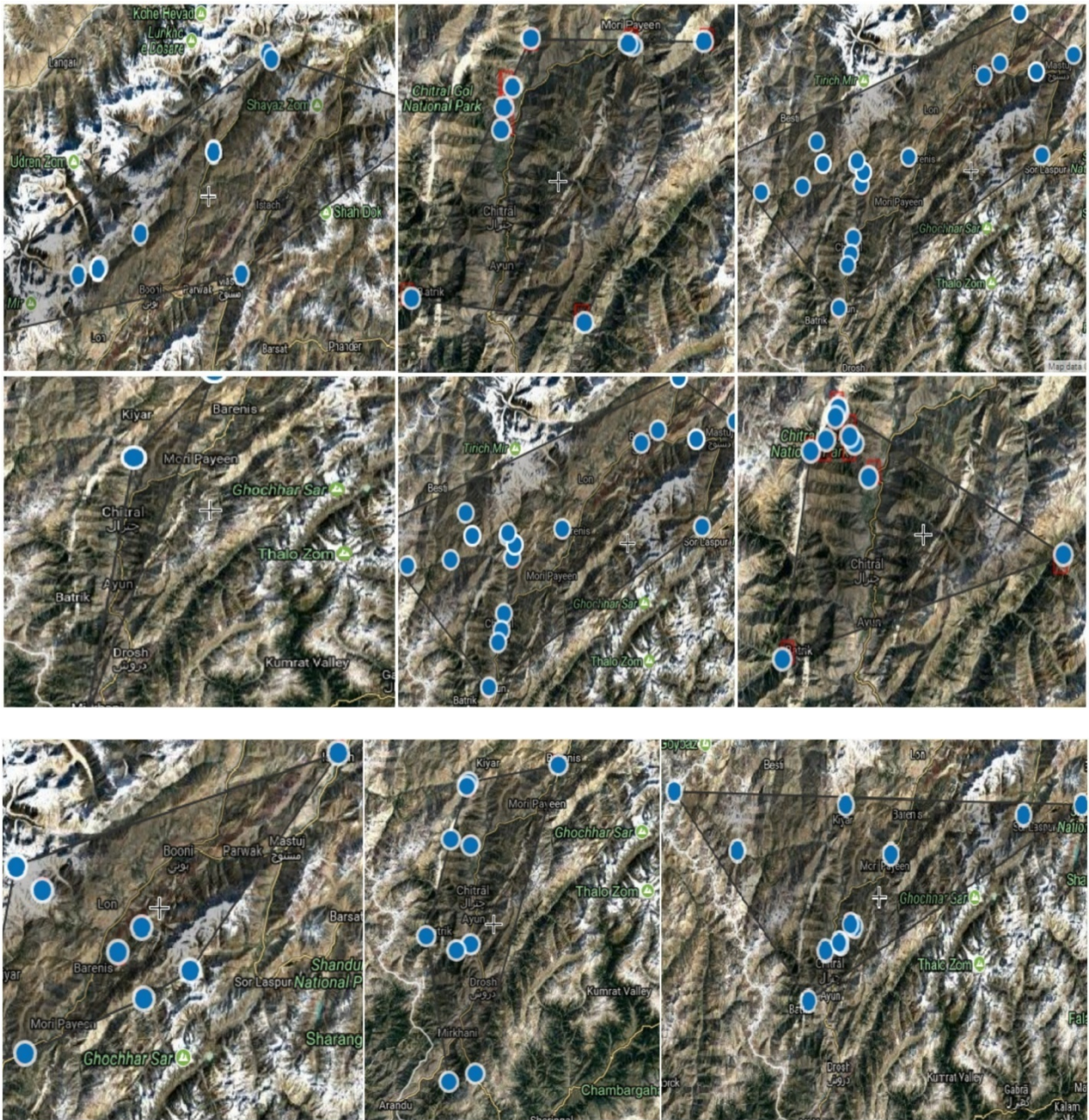
³Forest Department Chitral, Pakistan

Corresponding author's email: rizwana.khan@gmail.com

Annex c. Maps showing occurrences of endemic species.



Map showing occurrences of *Anaphalis chitralensis*, *Astragalus commixtus*, *A. erionotus*, *A. mirabilis*, *Delphinium kohatense*, *D. nordhagenii* (from left to right)



Map showing occurrences of *Gaillonia chitralensis*, *Galium ghilanicum*, *Oxytropis gloriosa*, *Polygonum cognatum*, *Silene longisepala*, *Silene pseudoverticellata*, *Psychrogeton chitralicus*, *Impatiens lemannii*, *Strigosella toppinii* (from left to right)